



RC11 members at Lilla Bommen Harbour, Gothenburg.

In this Issue

From the Editor	2
From the President	3
New Board Bios	4
French Pension Protests	12
ASA's Reports on Training Sociology Students	12
Resource Center on LGBT Aging	12
Video Provides Tips to NIH Applicants	12
Country Brief: Japan	13
FUTURAGE: A Road Map for Aging Research	14
In Memoriam: Elise Boulding's Journey with Alzheimers	15
Announcements	16
<i>Call for Papers</i>	16
<i>Meetings</i>	16
<i>Funding</i>	17
<i>Jobs</i>	19
<i>Competitions</i>	20
<i>Websites</i>	21
<i>Data</i>	21
<i>Training</i>	21
What Are Members Writing and Reading?	22

RC11 Newsletter is published semi-annually by the Research Committee on Sociology of Aging (RC11) of the International Sociological Association (ISA), and mailed electronically to all RC11 members. Send contributions to ecalvo@uc.cl. Article submissions are limited to 1,000 words, will be reviewed by the RC11 officers for possible publication, and may be edited for clarity or space.

From the Editor

Esteban Calvo | ecalvo@uc.cl



The International Sociological Association World Congresses of Sociology are always inspiring and an excellent opportunity to interact with other RC11 members. This year 5,007 sociologists from 103 countries gathered in Gothenburg, Sweden, from July 10 to 17. RC11 had a wonderful presence there, featuring 21 sessions, including four sessions organized jointly with other research committees. These sessions combined with informal social meetings provided a vibrant space for sociologists to convene and share their research on aging.

The RC11 activities at the World Congress in Sweden also included elections. Every four years, during the World Congress, RC11 members elect a new executive board. The board concluding their term in 2010 included: President Sara Arber, Vice-President Lars Andersson, Vice-President and Treasurer Anne Martin-Matthews, Secretary Susan Feldman, Newsletter Editor Andreas Hoff, and members at large Michael Fine, Liliana Gastron, Paul Higgs, Jaco Hoffman, Arvind Joshi, Ian Jones, Hong Kin Kwok, Laszlo Kovacs, PKB Nayar, Ronica Rooks, Helene Thomas, Virpi Timonen, Lucie Vidovičová, and John Williamson. I want to pay tribute to these remarkable sociologists who have significantly contributed to the RC11 success during the past four years or longer.

In this issue of the RC11 newsletter you will find a letter from our new President, Anne Martin-Matthews, and the bios of each member of our new RC11 board. This newsletter also features stimulating contributions by RC11 members, ranging from news and brief announcements to short articles on aging in Japan and Europe. As the Newsletter Editor, I look forward to continue receiving your contributions and suggestions for the newsletter and to seeing many of you at the ISA Forum of Sociology in 2012 and the next XVIII ISA World Congress of Sociology in 2014 in Yokohama, Japan. *

Sincerely,

Esteban

XVII ISA WORLD CONGRESS OF SOCIOLOGY

SOCIOLOGY ON THE MOVE
LA SOCIOLOGIE EN MOUVEMENT
LA SOCIOLOGÍA EN MARCHA

11-17 JULY, 2010
GOTHENBURG, SWEDEN



From the President

Anne Martin-Matthews | amm@interchange.ubc.ca



Welcome to the first issue of the Sociology of Aging RC11 Newsletter following the highly successful ISA World Congress in Gothenburg, Sweden. On behalf of the Executive Committee of the RC11, I sincerely thank the organisers of the

stream of excellent sessions on aging at the World Congress in Gothenburg. Sara Arber, Lars Andersson, Susan Feldman, Virpi Timonen, Sandra Torres, and Lucie Vidovičová put together an outstanding programme of sessions RC 11 sessions were notable for the quality of the presentations, the level of committed attendance and the level of discussion and dialogue that characterized each session. In addition, Sandra Torres and Lars Andersson organized a very memorable networking reception for RC11 members on the opening day of the Congress – sincere thanks to all. Bravo to one and all!

At this time, it is also appropriate to acknowledge the commitment and hard work of the out-going RC11 Executive, and especially of our (now) Past President, Sara Arber. Sara has served RC11 both as Vice-President (2002-2006) and as President for the last four years. Among numerous examples of her dedication and leadership, Sara organized one of the most successful Inter-Congress meetings in RC11's history (in 2004) and led the Program Committee for the recent World Congress in Gothenburg, where we had an impressive 17 sessions and four joint sessions with other Research Committees, such as on "Family Research" and on "Sociology of Childhood". In addition, Lars Andersson (President 2002-2006; Vice-President 2006-2010) has served on the RC11 executive for (he tells us) 19 consecutive years – an extraordinary record of service! It was fitting to bid Lars farewell to the Executive and to acknowledge the length and dedication of his service while we were in his home country, Sweden. A sincere thank-you to Lars and to Sara for their commitment to and leadership of RC11.

A major way in which the objectives of RC 11 are achieved is through meeting at conferences and seminars attended by sociologists of ageing from diverse countries. The next major meeting of RC11 members will be our Inter-congress conference. The last Inter-Congress meeting organized by RC11 was in 2004 at the University of Surrey, UK in conjunction with the meeting of the British Society of Gerontology. In 2008, RC11 opted to hold its Inter-Congress meeting as part of the First ISA World Forum of Sociology, held at the University of Barcelona, Spain. The ISA has issued a call for Expressions of Interest in hosting an Inter-Congress meeting in the form of another ISA World Forum of Sociology in 2012. At this time, the RC11 Executive is awaiting word on the location and timing, prior to making a decision as to whether or not to link our Inter-Congress meeting to that event. Other RCs organise more than one Inter-Congress meeting, so the RC11 Executive will also consider this possibility. I welcome your input and suggestions as we consider programming options in the near future.

I am honoured to serve RC11 as President for the next four years, and I am especially pleased to have a strong team to support the main work of the RC11 Executive. Andreas Hoff (UK) and Susan Feldman (Australia) are our two Vice Presidents; Julie McMullin (Canada) is Treasurer; Lucie Vidovičová (Czech Republic) is Secretary and Esteban Calvo (Chile) is our Newsletter Editor. These individuals constitute the Executive Management Group of RC11. In keeping with RC11 By-laws, I will work with this Group, together with the wide range of expertise from members-at-large within the Executive Committee, to ensure that RC11 continues to flourish and expand.

I look forward to receiving ideas and suggestions from the Executive Committee and other RC11 members as to ways in which to strengthen international research and collaboration on sociology of aging. *

With all good wishes,
Anne Martin-Matthews

New Board Bios

EXECUTIVE MANAGEMENT BOARD



PRESIDENT

Anne Martin Matthews,
University of British Columbia,
Canada, amm@interchange.ubc.ca

Anne Martin-Matthews is the Scientific Director of the Institute of Aging, one of 13 national Institutes of the Canadian

Institutes of Health Research, and is a Professor in the Department of Sociology at the University of British Columbia in Vancouver, Canada. Her publications include books on Aging and Caring at the Intersection of Work and Home Life: Blurring the Boundaries (with J. Phillips); Widowed in Later Life; three edited

volumes (on methodological diversity, bridging policy and research on aging, and Canadian gerontology in international context) as special issues of the Canadian Journal on Aging; and papers on aging and health, intergenerational relations, social support, caregiving, work-family balance, and rural aging. Her current research examines the perspectives of home care workers, elderly clients and family caregivers on issues of health and social care. Anne, is a member of the editorial boards of Ageing and Society, the Journal of Aging Studies and the Policy Press series on 'Ageing and the Life Course'. She is a Fellow of the Gerontological Society of America and of the Canadian Academy of Health Sciences. *



VICE-PRESIDENT

Andreas Hoff,
Oxford Institute of Ageing, UK,
andreas.hoff@ageing.ox.ac.uk

Dr. Andreas Hoff (M.Sc. Sociology, University of Leipzig, Germany; Ph.D. Social Policy, London School of Economics, UK) has been Senior

Research Fellow of the Oxford Institute of Ageing, University of Oxford, directing the Research Programme on "Intergenerational Relations, Families and Communities" until the end of 2010. From January 2011, he will be Professor of Social Gerontology at Zittau-Görlitz University of Applied Sciences in Germany. His research has focused on various aspects of intergenerational relations in the family and the wider community, on family care and home care, as well as on population ageing and ageing societies in Central and Eastern Europe. Accordingly, Andreas has been co-coordinating the "Eastern-European Ageing Societies in Transition" (EAST) Research Network. He is lecturing a course in "Population Ageing" for M.Sc. and doctoral

students (jointly with Dr. George Leeson) at Oxford and is supervising doctoral students. Andreas joined RC11 in 2002 and has served on the RC11 Executive Board as Newsletter Editor 2002-2006 and 2006-2010. He was member of the RC11 Scientific Programme Committee organizing the RC11 Inter-congress conference at Surrey, UK, in 2004 and served as Chair of the RC11 Scientific Programme Committee for the XVI ISA World Congress of Sociology in Durban, South Africa, in 2006 and the First ISA World Forum in Barcelona, Spain, in 2008. Dr. Hoff serves on the Editorial Board of the *International Journal of Ageing and Later Life* and of the *Journal of Intergenerational Relationships*. He published 5 books and 50 articles, chapters and reports. His latest publications include an edited volume on "Population Ageing in Central and Eastern Europe" (Ashgate, in press), a tri-lingual compendium on intergenerational relations (with K. Lüscher, L. Liegle, A. Lange, M. Stoffel, G. Viry & E. Widmer) published by the Swiss Academy of Humanities and Social Sciences, and a chapter on grandparenting in *The Sage Family Health Encyclopedia*. *

New Board Bios

EXECUTIVE MANAGEMENT BOARD



VICE-PRESIDENT

Susan Feldman,
Monash University, Australia,
susan.feldman@monash.edu.au

Dr. Susan Feldman is a Professor and the Director of the Healthy Ageing Research Unit at Monash University, Melbourne, Australia. She is an expert in the study of older community dwelling people and their ageing experience. In her work as a social gerontologist role she has undertaken extensive research over the past 20 years, her research interests including the psychosocial health and wellbeing of community dwelling women and older people from Culturally and Linguistically Diverse Communities. Dr. Feldman is also involved in interdisciplinary research that explores the relationships between generations. She has a special interest in the experience of widowhood for women and the impact of this experience on their health and wellbeing. Dr. Feldman is also the Co-Chair of the Intergenerational Committee on Intergenerational Programmes having been a

general committee member for 8 years. Dr. Feldman has extensive experience of and is actively involved in developing innovative strategies for translating research findings and health promotion messages for the general community. She works closely with a range of community groups, peak bodies and government to ensure that research findings are integrated into policy and practice. One particular strategy for translation of research into community based information and in particular relevant to the older population, is through the use of community based theatre. She is on the editorial board of an international journal and is a regular reviewer for a range of journals within the ageing and sociology fields as well as an examiner for higher research degrees and funding applications. Her publications include numerous journal articles and five edited book collections: *The Art of Ageing Well and the Art of Caring for Older Adults*, Baywood Press 2007, *A Certain Age: Women Growing Older*, 1999 Allen & Unwin, *Something that Happens to Other People* 1996 Random House, and *Family Violence: Everybody's Business, Somebody's Life*. 1991, Federation Press. *



TREASURER

Julie McMullin,
The University of Western Ontario,
Canada, mcmullin@uwo.ca

Julie McMullin is a professor in the Department of Sociology at the University of Western Ontario. She received her B.A. and M.A. from the University of Western Ontario and her Ph.D. from the University of Toronto. A former secretary-treasurer for the Canadian Association on Gerontology, her recent work examines social inequality in paid work, especially in relation to older workers. She was the principal

investigator on the international, Workforce Aging in the New Economy project (WANE), from which she edited (with Victor W. Marshall) one collection that has just been published by Edward Elgar Press entitled, *Ageing and Working in the New Economy: Changing Career Structures in Small IT Firms*. A second edited book from the same study, *Age, Gender, and Work: Small Information Technology Firms in the New Economy* is forthcoming with the University of British Columbia Press. And, a second edition of her book, *Understanding Social Inequality: Class, Age, Gender, Ethnicity, and Race in Canada* (2010), was recently published by Oxford University Press. *

New Board Bios

EXECUTIVE MANAGEMENT BOARD

**SECRETARY**

Lucie Vidovičová,
Masaryk University, Czech Republic,
lucie.vidovic@seznam.cz

Mgr. Lucie Vidovičová, Ph.D. is a sociologist and a Research Fellow at the Faculty of Social Studies, Masaryk University and at the Research Institute for Labour and Social Affairs. She has long term research interest in the sociology of ageing and issues such as age discrimination, attitudes of the population towards ageing, active ageing, and

ageing in urban environment. More recently she was also involved in projects dealing with preretirement, financial literacy, or work – retirement decision making. Besides research for national funding bodies, she has been involved in several EU research projects. She also works as a consultant to different governmental bodies and cooperates with non-governmental organizations in the field of senior advocacy and age mainstreaming. As a part of her new project “Ageing in the environment: regeneration, gentrification and social exclusion as new issues in environmental gerontology” she edits web site <http://starnuti.fss.muni.cz> *

**NEWSLETTER EDITOR**

Esteban Calvo,
Pontificia Universidad Católica, Chile,
ecalvo@uc.cl

Dr. Calvo is an Assistant Professor of Sociology at Pontificia Universidad Católica, Chile. He earned a Ph.D. in Sociology from Boston College, a M.S. in Public Health at Harvard University, and a B.S. in Sociology from Universidad Católica. Dr. Calvo’s research interests include aging and the life course, social epidemiology, comparative public policy, and quantitative methods. His work aims to identify and understand the factors that

influence health and happiness of older adults and to evaluate policies that can improve their well-being. His research has been funded by the Center for Retirement Research, U.S. Social Security Administration, and the Government of Chile. He received a Harvard Presidential Fellowship, the Retirement Research Foundation Laurence G. Branch Doctoral Award from the American Public Health Association, the Severyn T. Bruyn Award for Outstanding Scholarship in Social Economy and Social Justice from the Department of Sociology at Boston College, and the Student Research Award honorable mention from the Gerontological Society of America’s section on Social Research, Policy, and Practice. *

Visit the RC11 Website at

www.rc11-sociology-of-aging.org

This website will inform you about the diversity of past, current and future activities of the RC11 global network of academics with a research interest in the social aspects of individual, population and societal ageing.

New Board Bios

OFFICERS AT LARGE



Sally Bould,
University of Delaware, United States, salbould@udel.edu

Sally Bould, PhD., Fellow, The Gerontology Institute, University of Massachusetts, Boston and Professor Emerita of Sociology, University of Delaware where

she has been on the Faculty teaching the Sociology of Aging for more than 20 years. She has published numerous articles in the areas of women and aging, poverty, and family with a focus on policy. She is a co-author of the book, *Eighty-five Plus*, which examines issues of state and family responsibilities for the oldest old population in the United States. She received a Fulbright Award in 2006 to study issues of women,

aging and families in Europe and she currently has an appointment as Senior Research Fellow, Centre for the Study of Poverty, Population and Socio-Economic Policy (CEPS), Differdange, Luxembourg. Her recent publications in the area of aging include "Hidden Gender Inequalities in Old Age, *Sociology of Health Care* Vol.28 (forthcoming), an entry on the "Oldest Old" in the *Encyclopedia of Health and Aging* (2007), a review of Tamara Hareven's contribution to the literature on carework in *The History of the Family* (2006) and "A Population Health Perspective on Disability and Depression among Elderly Men and Women" in the *Journal of Aging and Social Policy* (2005). Currently she is working on an examination of older women's (aged 55-64) employment and retirement policy in the context of aging of the population in Europe. *



Libby Brooke,
Swinburne University of Technology, Australia, lbrooke@groupwise.swin.edu.au

My initial research, which concentrated on the aged care field, has more recently focused on the employment of older

workers. I have been undertaking research in ageing since the mid-1990s and publications include the areas of ageing and social support, social health and public housing, older women's homelessness, veterans' communities and aged, community and residential care. Over the last decade, my research has primarily focused on ageing workforces and has included publications on the human resources costs and benefits of mature age workers, age discrimination in employment, career-retirement transitions and the management of older workforces in differing

occupational contexts (e.g information technology and aged care employment). Recent research projects include the role of Australian Chief Investigator within a Canadian funded SSHRC project (2002-2006) (Workforce Ageing in the New Economy) under the auspices of the University of Western Ontario, which examined intersections between ageing, information technology and the new economy. A current research project, the 'Meteor' project (2006-2011) aims to support the retention of older aged care workers in employment through applying a life-course approach based in the Finnish Institute of Occupational Health 'workability' concept. Further current projects (funded by the Australian Research Council) as a Chief Investigator, include a study of older women's work-life transitions and another study of older workers' place in labor supply in a globalizing economy. I have a PhD in social gerontology, from La Trobe University Melbourne Australia. *

New Board Bios

OFFICERS AT LARGE



Ricca Edmondson,
University of Ireland Galway, Ireland,
ricca.edmondson@nuigalway.ie

Ricca Edmondson is based at the National University of Ireland, Galway. Her research on ageing stresses questions relating to meaning, purpose and wisdom in older people's life-courses. Her sympathy with work by critical and cultural gerontologists is shown in the collection *Valuing Older People: A Humanist Approach to Ageing* which she co-edited with Hans-Joachim von Kondratowitz (2009), and in *Ageing, Insight and the Life Course: Social Practices and Intergenerational Wisdom* (Bristol: Policy Press, to appear 2012). She has published on ethnographic issues associated with ageing,

and specifically on wisdom and ageing; she is now working on a history of discursive wisdom with Markus Woerner. Her work also emphasises the importance of international, intercultural and interdisciplinary elements in the study of ageing, and of bringing to bear debates in other fields (those on communication and power, or discursive democracy) on questions of ageing. One of her major interests in teaching and research is in developing innovative, theoretically-informed ethnographic methods for tracing the elicitation of meaning. She is a member of the international board of Ageing and Society. For a decade Ricca Edmondson has been a co-ordinator of the Research Network on Ageing in the European Sociological Association, and has regularly co-organised international conferences for the ESA and elsewhere. *



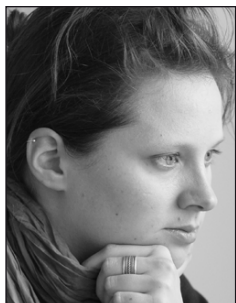
Arvind Joshi,
Banaras Hindu University, India
arvindvns@sify.com

Prof. Arvind Kumar Joshi is a Professor of Sociology and Coordinator Social Work Programme in Banaras Hindu University, Varanasi, India. He has more than 25 years of teaching and research experience. He has three books and dozens of papers (research papers, articles, chapters in books, review articles, etc.) to his credit. He is actively involved in the academic assignments in different universities/colleges of the country and on time to time invited for special lectures and public discourses. He is Convener of Research Committee 19 (Ageing and Social Structure) of Indian Sociological Society and Secretary of Association of Gerontology, India. He is a widely travelled person and visited Norway, Canada, Australia,

China, Japan, Thailand for academic pursues. He has convened a session at the 36th World Conference of the International Institute of Sociology, Beijing, China, July, 2004 and was a panelist in Chiba University, 21st Century COE Programme International symposium, The First Asian Public Policy Research Consortium meeting, Japan, 27-28 March, 2006. He was also a Visiting Professor at Mahamakut Buddhist University, Bangkok, Thailand, 2000. He is a Principal Investigator of a major project on Elder Abuse and Neglect. He has produced 16 Ph.D.s and 8 Ph.D. research students are working under him on ageing related topics. Prof. Joshi has managerial and leadership capabilities and has wide experience pertaining to teaching, extension, examination, research and administration. He has a working experience with students of Liverpool School of Tropical Medicine, London and also with the study team of JICA, Japan at Varanasi. He is member of several professional/academic bodies. *

New Board Bios

OFFICERS AT LARGE



Kathrin Komp,
University of Lethbridge, Canada,
kathrin.komp@uleth.ca

Kathrin Komp is a postdoctoral researcher at the Prentice Institute for Global Population and Economy, University of Lethbridge, Canada. She holds a

PhD in sociology from VU University Amsterdam, the Netherlands and Master's degrees in political science and home economics from Justus-Liebig-University

Giessen, Germany. Her research interests are in social gerontology, comparative welfare research and research methods. In particular, she is studying third-agers from the perspective of the moral and political economy of ageing. Her publications include a co-authored article on the influence of welfare states on the number of third agers (published in *Ageing & Society*) and a co-edited book entitled "Gerontology in the era of the third age" (forthcoming with Springer, New York). Kathrin Komp is a coordinator of the "Research Network on Ageing in Europe" of the European Sociological Association. *



Jacob John Kattakayam,
University of Kerala, India,
jjkattakayam@yahoo.com

Prof. Jacob John Kattakayam, MA, LL.B., Ph.D., President of the Indian Sociological Society, Director of the Centre for Gerontological Studies, was the Director cum Professor of

the UGC Academic Staff College, University of Kerala for more than twelve years. Before that he was on the faculty of the Department of Sociology, University of Kerala. He was member of the ICSSR (2005-2008) Secretary of the Indian Sociological Society for two times (2001-2005), and Visitor's nominee to the Faculty of Education, University of Delhi (2007-2010). He has served as Visiting Professor, at University of Southern California, U.S.A 2004, and Montclair State University, New Jersey, USA during Spring 2003. He has also served as visiting faculty in the Morgan State University, USA in 1987 and Duke University, North Carolina, USA (1998) and has visited several Universities in USA, Canada, Europe, South America, Australia, Africa and Asia and delivered lectures. He was selected by the

UNFPA to attend an international workshop on Social Gerontology in Malta (1993) and an international workshop on health expectancy at Nihon University, Tokyo (1999). The Ministry of Human Resource Development at the invitation of the South African Government nominated him to present the country paper in the Academic Seminar held in connection with IBSA Summit in Johannesburg, Oct. 15 – 17, 2007. He has Authored four books and edited three. He is a member of several professional organizations in India and abroad and has published several research papers in journals of national and international repute. He was the Dean, Faculty of Social Sciences, (2007-2009), member of the Senate and Academic Council of the University of Kerala, Secretary of the Indian Sociological Society (2001-2005), president of the Kerala Sociological Society (1995-99) Member of the Executive Committee (RC 11) of the International Sociological Association (1998-2002). Currently he is the, Kerala Sociologist and Hon Director of the Centre for Gerontological Studies, Thiruvananthapuram. Recently he has been elected to the Board of Directors of International Rural Network, (IRN) Canada. *

New Board Bios

OFFICERS AT LARGE



Hong Kin Kwok,
Lingnan University, Hong Kong,
kwokhk@ln.edu.hk

Dr. Hong-kin Kwok is assistant professor in the Department of Sociology and Social Policy in Lingnan University, Hong Kong.

His research interests are family care, family change and educational change. He is centre fellow of the Asia-Pacific Institute of Aging Studies of Lingnan University, and Executive Board Member of the Research Committee on Sociology of Aging (RC11), International Sociological Association, 2002-2006 & 2006-2010. *



Wendy Martin,
Brunel University, UK,
wendy.martin@brunel.ac.uk

Dr. Wendy Martin joined the School of Health Sciences and Social Care at Brunel University, UK, in October 2009 as a Lecturer in Health Studies. Previously Wendy

was a postdoctoral research fellow at the University of Reading developing a research agenda into social aspects of ageing. Wendy's background has involved nursing and contract research, and she has completed a BSc in Sociology and Anthropology at Oxford Brookes University (1997); and an MA in Sociological Research in Health Care (1999) and a PhD in Sociology (2007)

both from the University of Warwick, UK. Her doctoral thesis was entitled 'Embodying active ageing: health, bodies and emotions in later life'. Wendy is currently co-investigator on 5 externally funded research projects as well as a Principal Investigator for the ESRC First Grants scheme research project 'Photographing Everyday Life: Ageing, Lived Experiences, Time and Space'. This project brings together Wendy's interests in visual research, embodiment, and the sociology of everyday life. Wendy is Honorary Secretary of the British Society of Gerontology (BSG), co-convenor of the BSA (British Sociological Association) Ageing, Body and Society study group, and Officer at Large for the Executive Committee of ISA (International Sociological Association) RC11: Sociology of Ageing. *

Shirley Nuss,
United States,
nussphd@yahoo.com

During the early years of my professional career, I served national professional organizations as an elected member of several committees for the American Sociological Association and as elected officers for Sociologists for Women in Society. At the same time, I helped organize the first four meetings of an ISA research committee as an elected member of its Executive Board and as Chair of its Nominations Committee. During the 1990s, I was a visiting research fellow at Oxford University and my professional papers were accepted for the archives of

the Schlessenger Library on the History of American Women at Harvard University. In a departure from the traditional academic career, however, the bulk of my professional career has been spent working abroad as an independent research consultant exclusively for the specialized agencies of the United Nations at their international headquarters in New York, Geneva, Paris and Vienna. As supplement, I spend nearly two decades conducting research in the Asia and Pacific region where I prepared the first comprehensive survey of social protection scheme (including social security and health care) for the sixty-member countries and compiled national indicators for the elderly population in these same countries. When my

New Board Bios

OFFICERS AT LARGE

mother became seriously ill in 2000, I immediately returned to assume full responsibility for the care for my elderly parents in their home in a rather isolated rural area where health care and elder care remains inadequate. These experiences support a



Virpi Timonen,
Trinity College Dublin, Ireland,
timonenv@tcd.ie

Virpi Timonen, DPhil (Oxon.) is Senior Lecturer in Social Policy and Ageing and Director of the Social Policy and Ageing Research Centre (www.sparc.tcd.ie) in

the School of Social Work and Social Policy at Trinity College Dublin. Dr. Timonen has published articles on long-term care policies, migrant care workers, grandparents' role in families and participation of older adults in care settings and communities in *Ageing & Society*, *Journal of Aging Studies*, *Canadian*

unique perspective on the research focus of this research committee. I thus offer this perspective and my commitment to policy-oriented research with international implications as a foundation for my service to further the activities of this committee. *

Journal of Aging, Research on Aging, Journal of Social Policy and several other leading international journals. Dr. Timonen is the author of *Ageing Societies: A Comparative Introduction* (Open University Press) and four other books. She is a co-investigator in the Irish Longitudinal Study of Ageing, TILDA (www.tilda.tcd.ie), and chairs the TILDA Translational Research and Policy Implementation sub-committee. Virpi has been involved in RC 11 since 2006 when she was elected an Officer-at-Large at the Durban world congress meeting. She has been actively involved in the work of the RC as a member of the organizing committees for the Barcelona (2008) and Gothenburg (2010) conferences. *



John Williamson,
Boston College, USA,
jbw@bc.edu

John B. Williamson is currently Professor Sociology in the Department of Sociology at Boston College. He is also affiliated as a research associate

at the Center for Retirement Research at Boston College a research associate at the Center for Retirement at Boston College and as a Research Fellow at the Sloan Center on Aging and Work at Boston College. His BS degree is from MIT and his Ph.D. is from Harvard University. He was recently the Chair of the Social Research, Policy, and Practice

Section and a vice president of the Gerontological Society of America. His research focuses is on the comparative study of old-age security systems and the debate over generational equity. His books deal with such topics as the politics of aging, the senior movement, and the comparative study of social security. Recently he has published on such topics as ageism and the future of retirement security. He has written a great deal about the partial privatization of pension systems and alternative to privatization such as the use of notional defined contribution (NDC) schemes. Much of his recent work focuses in developments in East Asia, particular China and Japan. For a full list of publications Google "John B. Williamson" or go to <http://www2.bc.edu/~jbw/> *

French Pension Protests

After weeks of strikes, demonstrations, and strong public opposition, both houses of the French parliament voted to rise the legal minimum retirement age from 60 to 62 years. Representatives claim that their pension system will collapse without reform, while unions see retirement at age 60 as a firmly entrenched right and remain strongly committed to opposing the increase in the country's retirement age. Though the minimum retirement age would be 62, people would only receive partial benefits and would have to wait until age 67 if they wanted full pension benefits, two more years than today. *



ASA's Reports on Training Sociology Students

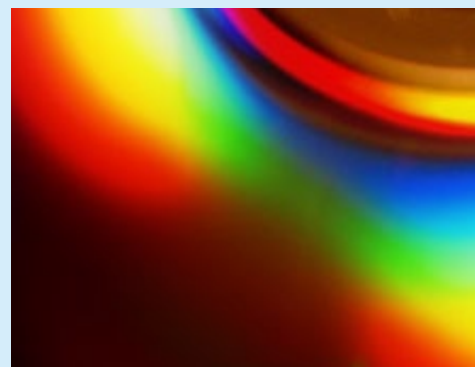
The American Sociological Association (ASA) has released a number of reports of interest to faculty members and departments training sociology undergraduate and graduate students. The manual "Launching Majors into Satisfying Careers: A Faculty Manual with a Student Data Set" provide faculty members and their departments with a variety of easy-to-access resources to help students prepare for and navigate the job market. The manual can be ordered online at www.e-noah.net/asa/asashoponlineservice/ A separate report on master's students identifies the skills that they most often use on the job, including: working with people, organizing information, using computers, writing reports, and interpreting data. This report highlights that employed respondents wished they had additional opportunities, including: learning about grant writing, having better access to career counseling, and participating in an internship programs. For a full description of graduate school experience and outcomes, see *Paying Attention to the Master's Degree in Sociology* at www.asanet.org/research/MAinSociology.pdf *

Resource Center on LGBT Aging

In early 2010, the U.S. Department of Health and Human Services Administration on Aging awarded a landmark grant to Services and Advocacy for GLBT Elders (SAGE)—in partnership with 10 organizations from around the country—to establish the country's first and only technical assistance resource center aimed at improving the quality of services and supports offered to lesbian, gay, bisexual and transgender (LGBT) older adults. More information about The National Resource Center on LGBT Aging is available at www.lgbtagingcenter.org *

Video Provides Tips to NIH Applicants

The Center for Scientific Review (CSR) of the U.S. National Institute of Health (NIH) has produced a series of videos to give applicants an inside look at how scientists from across the U.S. review more than 80,000 NIH grant applications each year for scientific and technical merit. New and established applicants will find in these videos advice that can help them improve the applications and increase their chances for receiving positive reviews. The videos are available at www.csr.nih.gov/video/video.asp *



Country Brief: Japan

Yokohama



The next (2014) ISA World Congress will be held in Yokohama, Japan – currently the world’s most aged country. In the midst of global concerns about population aging and its social, political and economic consequences, Japan is in many ways serving as a case study of these consequences and the efficacy of various strategies for dealing with them. Policy analysts from other countries around the world can potentially learn a lot from a close study of what is going on today in Japan with attention to which strategies for dealing with these issues are working and which are not working as well.

Since 2007, the United Nations has classified Japan as what is termed a super-aging country. This term is sometimes used to describe those countries in which 21 percent or more are aged 65 and over. In 2010, this age group accounts for 23 percent of the country’s population, whereas the corresponding figure for the world is only 7.6 percent. Japan is also the country with the oldest median age and highest old-age dependency ratio. Japan has also experienced population aging at a much faster rate than experienced

by most other industrial countries. For instance, for the 65+ age group to increase from 7 to 14 percent of the total population took about 115 years in France, 85 years in Sweden, and 69 years in the U.S, but only 26 years in Japan.

In many respects population aging can and should be viewed as a positive societal development. It is a natural outcome of: (1) its highly education population, (2) the high quality of and access to medical care, and (3) generous government spending on age-related social welfare programs. Despite these achievements, however, in the case of Japan, this fast population aging has created unprecedented challenges to the country and government policy makers. The main challenges are found in four areas: (1) projected depopulation over the next few decades which may weaken the country’s economic vitality in an increasingly competitive 21st century global economy; (2) mounting pressure to delay the retirement of older male workers which must be balanced with the potential unintended risks of reducing employment opportunities for younger workers and older women; (3) improving a

Masa Higo | higo@bc.edu
Boston College, Sociology Department

John B. Williamson | jbw@bc.edu
Boston College, Sociology Department

new medical insurance program exclusively for those age 75 and older (implemented in 2008), which is being severely criticized by many as a form of age-based health care rationing; and (4) finding ways to integrate the foreign-born long-term care workers needed to serve the frail elderly into Japanese society, a society which is currently characterized by strong cultural and linguistic homogeneity and persistently strict immigration policy.

In order to deal with these challenges, Japan needs to gradually engage in restructuring long-held social institutions and the traditional cultural values that underlie the country’s long-established employment institutions, social policies, and welfare programs. As the world’s premier example of a super-aging society, Japan’s experience calls for greater attention from sociologists of aging and the life course around the world. Those interested in such issues as depopulation, old-age labor force participation, health insurance, and long-term care will be particularly interested in learning about the ways in which Japan is trying to balance pressures linked to population aging in an increasingly competitive global economy on the one hand with the need to consider the well-being of young and middle aged members of Japanese society at the same time. Come join us for the next ISA World Congress in 2014. Enjoy the attractions and learn both achievements and challenges of the world’s most aged country. ✨

FUTURAGE: A Road Map for Aging Research



FUTURAGE is a two-year project funded by the European Commission, under the Seventh Framework Programme, and coordinated by the Sheffield University (Prof. Alan Walker) aimed at developing a Road Map for Ageing Research in Europe for next 10-15 years. Drawing on experts and specialists from Europe and beyond, the Road Map will represent the most extensive consultation ever conducted in this field and identify the main priorities on Ageing Research from a multi-disciplinary perspective. In order to identify these priorities, the Ageing Research field has been subdivided into five broad Themes, each one included in a Work Package (WP) and dealing with different areas of research: Biogerontology (WP2), Social & Economic Resources (WP3), Environments of Ageing (WP4), Healthy Ageing (WP5), and Users Agenda (WP6).

The WP3 is coordinated by the Italian National Institute of Health and Science on Aging (INRCA) and its principal investigator is Dr. Giovanni Lamura. Within this WP, two Workshops took place in Ancona, Italy (in February and July 2010), and more than 60 scientists have been involved.

Workshop participants identified a detailed list of research priorities in the field of Social & Economic Resources. In a first attempt to summarize Workshop findings, priorities have been grouped into ten areas, representing some of the major social processes and institutions interacting with ageing (i.e. which are influencing and are influenced themselves by it): a) Social Participation; b) Labour Market; c) Families and Generations; d) Education; e) Consumption; f) Welfare; g) Spirituality; h) Technologies; i) Migration; and j) Leisure. In each area main research interests and policy issues have been identified also taking into consideration new needs and challenges raised by the recent economic downturn.

Francesco Barbabella | f.barbabella@inrca.it
INRCA - National Institute of Health and Science on Aging

Carlos Chiatti | c.chiatti@inrca.it
INRCA - National Institute of Health and Science on Aging

Giovanni Lamura | g.lamura@inrca.it
INRCA - National Institute of Health and Science on Aging

In addition, among the identified research priorities, some “burning issues” have been more frequently stressed during the consultation and need specific attention: 1) Sustainability of welfare systems, e.g. pension system and support to frail elderly and their caregivers; 2) Migration in ageing Europe, e.g. employment of migrant care workers and integration of migrants in destination countries; 3) Inequalities and diversity in the ageing process, e.g. differences between socio-economic classes and ageing among minorities and different ethnic groups; 4) Age discrimination and ageism; and 5) Volunteering and social participation.

In addition, during the Workshops, participants widely discussed methodology, infrastructure and transferability issues: recommendations in this area have been included in the reports. For instance, important issues were raised concerning: data accessibility, coordination among countries and European projects, capacity building, multi-disciplinarity aspects and relations between ageing research and policymakers.

Furthermore, scientists involved in consultation process made also a series of suggestions regarding the final Road Map in its formal and content characteristics. The main aspects that emerged are: the expected target audience, mainly composed by policymakers at European Union (EU) level, but also by national agencies in ageing research; the contents of Road Map, that should consider both the infrastructure and research gaps existing between EU regions; the evaluation process of the draft Road Map, that may involve Workshop participants of all five WPs with a structured questionnaire; the need to anticipate revisions of the Road Map, making the document flexible and open to future changes.

The report from the 2nd Workshop is currently undergoing an internal revision process. For information about the FUTURAGE project, please visit the dedicated website (<http://futurage.group.shef.ac.uk/>). For information regarding the Social & Economic Resources consultation, you can contact WP3 coordination team: Carlos Chiatti (c.chiatti@inrca.it) or Francesco Barbabella (f.barbabella@inrca.it). ❀

In Memoriam Elise Boulding's Journey with Alzheimers

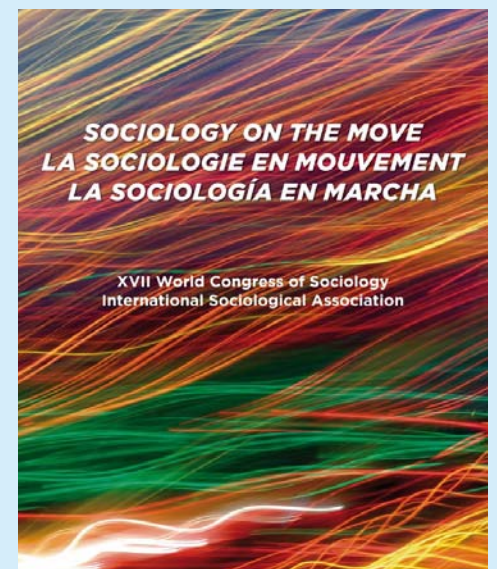
Elise Boulding, July 6 1920-June 24 2010, was an international sociologist known to many of the RC11 members and many sociologists throughout the ISA. She was active in several research committees and founder of at least two. As a futurist, she wrote several articles beginning in the early 1970s about the 'lifespan' which offered policy proposals for raising children to retirement living. She organized with other faculty members the plan and building of a retirement home with shared library and research facilities where she and her husband, economist Kenneth Boulding, lived in for years until he died. In other words, she applied her research findings and published numerous articles of interest to members of our committee.

Elise Boulding's Journey with Alzheimers is available at www.earthenergyhealing.org/EliseBoulding3.htm I think the members may find interesting her sociological perspective on Alzheimer and may wish to share it with their colleagues and students. Elise was my dissertation adviser and colleague. We co-authored my first book on national data and she supported my first UN project to collect national data and construct indicators as input to the first World Conference on Women – International Women's Year, 1975. She died this summer after living with Alzheimer, which is documented in the memoir. *

Shirley Nuss | nussphd@yahoo.com



RC11 Activities



1. Executive Management Board at Gothenburg.
2. Past Presidents Lars Andersson and Sara Arber, and current President Anne Martin-Matthews.
3. Dinner at River Café, Gothenburg.

Announcements



Call for Papers

Special Issue of Interacting with Computers on Inclusive Design in the Context of Social Media and Emerging Technologies. Recently we have witnessed the increased proliferation of new digital technologies such as online social networking sites, micro-blogging and virtual worlds which has changed the way we communicate and interact with each other. Emerging studies are being conducted in order to investigate these interesting socio-technological phenomena. To date, little has been done with respect to inclusive design in the context of social networking and emerging technologies. These technologies have the potential to have a positive impact on the lives of a wide range of people, for instance older people, disabled people, and people from different social and cultural backgrounds. For example, it has been reported that the fastest growing demographic of the social networking sites is women over 55 years old (Facebook Global Monitor, 2009). With this special issue, we aim to analyze existing and novel ways in which social networks and emerging technologies are used by these user groups. We ask questions such as: In what ways can these technologies be designed to be more inclusive? What are people's motivations for engaging with these new technologies? What is the effect on people's behavior, attitudes and social interactions? What methods can be used to analyze these interactions? Please submit a 300-500 word abstract to Dr. Jim Ang (c.s.ang@kent.ac.uk) no later than 28th January 2011. Please include full contact information and a biographical note (up to 75 words) on each of the authors. More information is available at www.eda.kent.ac.uk/research/theme_project.aspx?pid=129 *

International Review of Comparative Sociology invites papers for publication. The purpose of this peer-reviewed biannual journal is to examine through a comparative lens the issues and problems confronting societies, or their distinct subpopulations, around the world with the goal of providing innovative solutions from a sociological perspective. Research papers from other related disciplines in the social sciences are also encouraged. Send manuscripts to Debarun Majumdar at dm28@txstate.edu. Manuscript preparation guidelines and related information are available at www.soci.txstate.edu/IRCS/Journal.html *



Meetings

North Central Sociological Association, March 31 -April 2, 2011, Cleveland, OH. "Pragmatism in Research and Education." More information at www.ncsanet.org. Submissions deadline: December 15, 2010. Questions to deanapurdy@yahoo.com *

Methods Workshops at University of Arizona, January 6-8, 2011, Tucson, AZ. Workshops: Qualitative Comparative Analysis and Fuzzy Sets, Introducing Structural Equation Modeling, Introducing Social Network Analysis Methods, and Categorical Data Analysis. Questions to Erin Leahey methods@arizona.edu *

FISS 2011 Conference: Growth, Social Protection and Inequality, 8-10 June 2011, Sigtuna, Sweden. The 17th International Research Seminar of the Foundation for International Studies on Social Security (FISS) will be devoted to the interplay between economic growth, social protection and (changes in)

inequalities. Confirmed keynote speakers are: Lane Kenworthy (Professor of Sociology and Political Science, University of Arizona) and Martin Ravallion (Director of the Development Research Group of the World Bank). FISS welcomes submissions from authors from a range of relevant disciplines (e.g. economics, sociology, social policy, political science, public administration, law) and various backgrounds, including academics (at any stage of their career, (inter)national policymakers, experts from both public and private sector bodies, in all regions of the world. A paper title and abstract (200-300 words) should be submitted as an email attachment to the FISS conference organizers at: csb@ua.ac.be More information at www.fiss-socialsecurity.org.uk The closing date for the submission of abstracts is January 28, 2011. *

Eastern Sociological Society, February 24-27, 2011, Philadelphia, PA. "Intersectionalities and Complex Inequalities." More information at www.essnet.org *

Sessions on "Ageing in Europe" at the 10th conference of the European Sociological Association (ESA)

September 7-10, 2011, Geneva, Switzerland. The topic is "Ageing in Turbulent Times." As usual, the Research Network on Ageing in Europe will hold sessions during the conference, for example on the following topics: Consumerism in Older Age; Inequalities in Old Age; Health in Old Age; Formal and Informal Care and Older People; Intergenerational Relations in Older Age; Biography, the Life-Course and Older Age; and Retirement and Paid Work in Later Life. For a complete list of topics see http://ageing-in-europe.org/RN_news.htm

In contrast to previous years, abstracts now need to be directly submitted to ESA. Instructions for the abstract submission will be posted on

www.esa10thconference.com/submission.php

Abstract submission will be possible from January 10 until February 27, 2011. If you have any questions, please do not hesitate to contact the network coordinators via email: coordinators@ageing-in-europe.org *

Southwestern Sociological Association

March 16-19, 2011, Las Vegas, NV. "The Transformative Power of the Social Sciences." More information at www.sssaonline.org/ *

Midwest Sociological Society

March 24-27, 2011, St. Louis, MO. "The Dynamics of Inequality." More information at www.themss.org *

Southern Sociological Society

April 6-9, 2011, Jacksonville, FL. "Power, Revisited" More information at www.southernsociologicalsociety.org/annual.html *

British Sociological Association Annual Conference

April 6-8, 2011, London School of Economics, UK. "60 Years of Sociology." More information at Website: www.britisoc.co.uk/events/Conference *

18th Meeting of Europeanists

June 21-23, 2011, Barcelona, Spain. Organized by the Council for European Studies. More information is available at www.ces.columbia.edu *



Funding

AFAR Research Grants. The American Federation for Aging Research (AFAR) has announced the availability of its 2011 round of AFAR Research Grants. The major goal of this program is to assist in the development of the careers of junior investigators committed to pursuing careers in the field of aging research. AFAR supports research projects concerned with understanding the basic mechanisms of aging. Projects investigating age-related diseases also are supported, especially if approached from the point of view of how basic aging processes may lead to

these outcomes. Projects concerning mechanisms underlying common geriatric functional disorders also are encouraged, as long as these include connections to fundamental problems in the biology of aging. It is anticipated that approximately 15 grants of up to \$100,000 each will be awarded in 2011. Application deadline: December 15. More information at <http://afar.org/afarg9.html> *

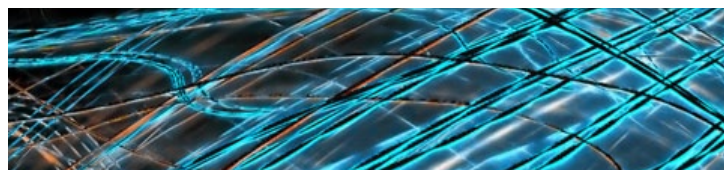
CRR Dissertation Fellowship. The Center for Retirement Research (CRR) at Boston College announces the 2011 Dissertation Fellowship Program for research on retirement income and disability insurance issues. The program, funded by the U.S. Social Security Administration, supports doctoral candidates writing dissertations on retirement income and disability insurance issues. The program is open to scholars in all academic disciplines. Awards up to seven fellowships of \$28,000. Requires proposals be submitted by Friday, January 28, 2011. Contact: Marina Tsiknis, tsiknis@bc.edu, 617-552-1092. Proposal guidelines can be found at: http://crr.bc.edu/opportunities/dissertation_fellowship_program.html *

ASA MFP Fellowship Program. The American Sociological Association (ASA) Minority Fellowship Program (MFP) is supported by significant annual contributions from Sociologists for Women in Society, Alpha Kappa Delta, and the Midwest Sociological Society, along with the Association of Black Sociologists, the Southwestern Sociological Association, and numerous individual ASA members. MFP applicants can be new or continuing graduate students in sociology who are enrolled in a program that grants the Ph.D. All MFP applicants must be members of an under-represented racial/ethnic minority group in the U.S. (e.g. Blacks/African-Americans, Hispanics/Latinos, Asians or Pacific Islanders, or American Indians/Alaska Natives). Applicants must also be U.S. citizens, non-citizen nationals of the U.S., or have been lawfully admitted

to the U.S. for permanent residence. The application deadline is January 31; notifications are made by April 30. The Fellowship for more information contact: minority.affairs@asanet.org *

Returning Experts Programme. This programme supports the professional integration of university graduates and experienced experts from developing, emerging and transition countries, who have completed their training in Germany and are interested in returning to their countries of origin. The focus is on placing professionals in areas of particular relevance to development policy. In addition to placement and advisory services, the programme offers financial support to experts interested in returning to their own countries. Employers, too, can benefit from programme services such as assistance with recruiting employees. The Returning Experts Programme is implemented by the Centre for International Migration and Development (CIM) on behalf of the German Federal Ministry for Economic Cooperation and Development (BMZ). CIM is a joint operation of the Deutsche Gesellschaft für Technische Zusammenarbeit (GTZ) GmbH and the International Placement Services (ZAV) of the German Federal Employment Agency (BA). For more information visit: www.zav-reintegration.de and www.cimonline.de *

American Council of Learned Societies (ACLS) Fellowships target scholars at every stage of the academic career, from dissertation completion to post-retirement research by emeriti professors. More information can be found on ACLS's various fellowship programs and specific deadlines at www.acls.org *





Jobs

Tenure-track Assistant Professor of Sociology at NC State.

The Department of Sociology and Anthropology at North Carolina State University is accepting applications for an Assistant Professor of Sociology (tenure-track) to begin Fall 2011. The successful candidate should have strong skills in quantitative analysis and should have research interests that connect to one or more of our doctoral concentrations (Crime, Deviance and Social Control; Family and the Life Course; Global Social Change and Development; Inequality: Class, Race, and Gender; Work and the Economy). The successful candidate will teach one or more advanced quantitative methods courses regularly in the graduate methods/analysis rotation. Qualifications: Candidate qualifications for the position include (1) a Ph.D. in Sociology by time of employment, (2) a strong record of research and publication with an excellent record of extramural research funding or promise of such funding; and (3) commitment to mentoring graduate students. Hiring above the assistant professor level may be possible depending on the qualifications and experience of the applicant. Application deadline: November 30, 2010. For more information visit: <http://jobs.ncsu.edu> referencing position #101948 or <http://jobs.ncsu.edu/applicants/Central?quickFind=88589> *

Post Doctoral Research Fellowship Grants in Gerontology at University of Southern California.

These fellowships are provided by a grant from the National Institute on Aging. Trainees may be in the Departments of Sociology, Psychology, Neuroscience, Preventive Medicine, Economics or in the School of Gerontology. We are specifically looking for postdocs with a background that will allow them

to develop a significant research profile based on a multidisciplinary approach to aging. Our research focus is on physical and mental health changes with aging. All Trainees take part in a regular seminar and coursework that appropriately develops multidisciplinary research competence. Monthly stipends, health insurance, some tuition, and related expenses will be provided to qualified applicants. Postdoctoral trainees must have completed a Ph.D., M.D., or equivalent degree. All candidates should forward a letter of interest, identification of a potential mentor, complete curriculum vitae, graduate transcript, GRE scores, representative papers or publications (if available), and at least three letters of recommendation to: Eileen M. Crimmins, Director of Training, Andrus Gerontology Center, University of Southern California, 3715 McClintock Avenue, Los Angeles, CA 90089-0191. Address questions to lindah@usc.edu or Eileen Crimmins, Gerontology and Sociology, crimmin@usc.edu More information can be found on our website: www.usc.edu/dept/gero/training/ Minority applicants are encouraged to apply. Appointments are available May 1, 2011. Deadline for application is January 15, 2011. *

Tenure-track Assistant/Associate Professor of Sociology Positions at National University of Singapore.

Successful candidates must have: a Ph.D. in Sociology from an internationally acclaimed institution at the time of appointment; fields of specialization are open; a track record and promising plan in research and publication, preferably with strong interest in Asian societies; excellent communication skills and dedication to academic teaching excellence and collegiality. Applications should include a letter of interest, curriculum vitae, a research and teaching statement, two article-length samples of research writing, evidence of teaching effectiveness, and names and contact details for three references. Send applications to: Professor Jean Yeung, Chair, Search Committee, c/o Ms Jane Ong at socjob@nus.edu.sg The closing date for applications is

December 1, 2010. Only short-listed candidates will be notified. More information is available at www.fas.nus.edu.sg/soc/faculty/job_opportunities.htm *

Post Doctoral Research Associate at Princeton University. The Office of Population Research at Princeton University is seeking a postdoctoral researcher to work on a project that examines the biological pathways linking social and economic factors to health among older cohorts in Taiwan. The candidate should have strong methodological skills and experience in working with large survey data sets. Appointment is for one year, with possible renewal, to begin as early as July 2011. Ph.D. in related discipline required. Complete an application at: <http://jobs.princeton.edu> Please include a cover letter, a curriculum vitae, samples of original work, and appropriate supporting material. Princeton University is an equal opportunity employer and complies with applicable EEO and affirmative action regulations. Applications will be considered starting March 15, 2011. Screening of applicants will continue until position is filled. *

Interdisciplinary Pre- & Postdoctoral Fellowships on Geriatrics/Gerontology and Health Services Research are available at Brown University for M.D.s, Ph.D.s and those seeking Doctoral training in Health Services Research or Epidemiology. The position requirements for a Postdoctoral Fellowship are: M.D. and continuation of basic clinical training or Ph.D. in Health Services Research, Sociology, Epidemiology, Economics or other related field. Qualified candidates for Doctoral training in Health Services Research/ Clinical Epidemiology are also eligible. Physicians seeking a Postdoctoral appointment may opt to pursue an MPH Degree. Pre- and Postdoctoral Fellows will have the opportunity to participate in ongoing research in one or more substantive areas, including Chronic Disease Management, Health Promotion and Prevention, Long-term Care, Community-based Systems of Care, Health Care Organizations and Methodological

Approaches to Health Services Research. The term of appointment for these positions for one year, renewable contingent upon funding. Screening for Postdoctoral positions will continue until all successful candidates have been identified or the search is closed, while Pre-doctoral applications are subject to standard application deadlines for Graduate study. Brown University is an equal opportunity/affirmative action employer. Interested Postdocs, please use this link: www.chcr.brown.edu Any additional questions may be directed to: Michele_Swallow@Brown.Edu, 401-863-3211. Interested Pre-docs., please contact: Susan_Furtado@Brown.Edu, 401-863-3681 *



Competitions

MSS Student Paper Competition. The Midwest Sociological Society's (MSS) 2011 Student Paper Competition is open to all students who are members of MSS. Graduate and undergraduate papers are judged in separate divisions with prizes in each division. Application deadline: January 8, 2011. More information at www.TheMSS.org *

Tel Aviv University Announces Million Dollar Prize to the Field of Aging. The Dan David Prize, sponsored annually by Tel Aviv University, covers three time dimensions — past, present and future — that represent realms of human achievement. A prize of one million U.S. dollars is granted annually in the fields chosen for each time dimension. The 2011 Dan David Prize for the future time dimension will be awarded to an individual(s) who has contributed significantly to the elucidation of the aging process and to the application of this understanding for the benefit of mankind. The application deadline is November 30. More information at www.dandavidprize.org *



Websites

ISA Presidents and Their Presidential Addresses.

This website traces addresses made by ISA presidents at successive congresses. The results are available at www.isa-sociology.org/about/presidents/about.htm *

TRAILS for Teaching Sociology. The American Sociological Association's (ASA) Teaching Resources and Innovation Library for Sociology (TRAILS) is a collection of digital resources for teaching sociology, available by paid subscription at a discounted rate for members. Visitors can search for materials by type, including: assignments, class exercises, syllabi, PowerPoint slides, multimedia files, links o web sites, and more. Specific contents on aging and social gerontology are edited by Monika Ulrich, Arkansas State University. More information at <http://trails.asanet.org/Pages/default.aspx> *

The NY Times "Retirement" Guide is an excellent source of useful ideas for teaching sociology of aging. Contents are available for free at: <http://topics.nytimes.com/your-money/retirement/index.html?emc=eta2> *

Award-winning Documentary on Aging. The documentary "To You Sweetheart, Aloha: Can Life Begin Again at 94?" captures the 94th year in the life of the ukulele-master Bill Tapia as he copes with aging-related personal obstacles and finally earns much-deserved recognitions in his eighth decade as a professional musician. This classroom tool can be helpful to engages students in thoughtful dialogue about the complicated relationship our society has with its older adults. You can watch the trailer at: www.walking-iris.com/sweetheartaloha/ *

Data

ICPSR Archive of Computerized Data on Aging.

The Inter-University Consortium for Political and Social Research (ICPSR) includes about 700 academic institutions and research organizations worldwide. ICPSR maintains a data archive of more than 500,000 files of research in the social sciences. It hosts 16 specialized collections of data in education, aging, criminal justice, substance abuse, terrorism, and other fields. More information at www.icpsr.umich.edu *



Training

Tulane University Interdisciplinary Ph.D. Program in Aging Studies is accepting applications for the Fall of 2011. Full tuition and stipend support provided. For more information visit: <http://tulane.edu/som/aging/interdisciplinary-phd-program-in-aging.cfm> *

1st IAGG Intensive Course on Ageing will be held on June 30th to July 1st, 2011, in Barcelona, Spain, under the auspices of the International Association of Gerontological Societies (IAGG). More information at <http://www.ic-ageing.com/> *

The U.S. National Institute of Aging's Summer Institute on Aging Research will be held on July 9-15, 2001, Queenstown, MD. The Summer Institute on Aging Research program includes lectures, seminars, and small group discussions in research design relative to aging, including issues relevant to aging of ethnic and racial minorities. The applicant must be a U.S. citizen, noncitizen national or permanent resident. Applications are due on March 4, 2011. For additional information on application forms contact Taylor_Harden@nih.gov *

What Are Members Writing and Reading?

Ardelt, Monika, Scott D. Landes, and George E.

Vaillant. 2010. "The Long-Term Effects of World War II Combat Exposure on Later Life Well-Being Moderated by Generativity." *Research in Human Development* 7(3):202-20.

Calvo, Esteban, Fabio M. Bertranou, and Evelina

Bertranou. 2010. "Are Old-age Pension System Reforms Moving Away from Individual Retirement Accounts in Latin America?" *Journal of Social Policy* 39(2):223-34.

Dannefer, Dale and Chris Philipson, eds. 2010. *The SAGE Handbook of Social Gerontology*. UK: SAGE.

Da Roit, Barbara and Blanche Le Bihan. 2010. "Similar and Yet So Different: Cash for Care in six European Countries' Long-term-care policies." *Milbank Quarterly* 88(3):286-309.

Felstead, Alan. 2010. "Closing the Gap? Age, Skills and the Experience of Work in Great Britain." *Ageing and Society* 30(8):1293-314.

Gasior, Katrin and Asghar Zaidi. 2010. *Social Well-being of Disabled Older Persons: An Evidence of Unequal Ageing in Europe*. European Centre for Social Welfare Policy and Research, Policy Brief October, Vienna.

Harper, Sarah. 2010. "The Capacity of Social Security and Health Care Institutions to Adapt to an Ageing World." *International Social Security Review* 63(3-4):177-96.

Herrera, Soledad and Rosita Kornfeld. 2010.

"Importancia de las Relaciones Familiares en la Satisfacción con la Vida en la Vejez." *Ageing Horizons* 9:40-58.

Hoskins, Dalmer D. 2010. "U.S. Social Security at 75 Years: An International Perspective." *Social Security Bulletin* 70(3):79-87.



Jackson, Richard and Neil Howe. 2008. *The Graying of the Great Powers: Demography and Geopolitics in the 21st Century*. Washington, DC: Center for Strategic and International Studies.

Jacobs Kronenfeld, Jennie, ed. 2010. *The Impact of Demographics on Health and Healthcare: Race, Ethnicity and Other Social Factors*. UK: Emerald Group Publishing Limited.

Komp, Kathrin and Theo van Tilburg. 2010. "Ageing Societies and the Welfare State: Where the Inter-Generational Contract is not Breached." *International Journal of Ageing and Later Life* 5(1):7-11.

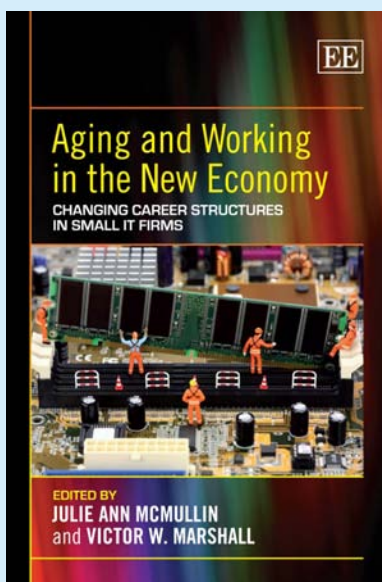
Komp, Kathrin, Theo van Tilburg, and Marjolein Broese van Groenou. 2010. "Paid Work Between Age 60 and 70 Years in Europe: A Matter of Socio-economic Status?" *International Journal of Ageing and Later Life* 5(1):45-75.

McMullin, Julie A. and Victor W. Marshall, eds. 2010. *Ageing and Working in the New Economy: Changing Career Structures in Small IT Firms*. Northampton, MA: Edward Elgar Publishing.

Montes de Oca, Verónica. 2010. "Migration in Mexico, Transnational Families and Social Support Networks for Women and Men Older Adults." *Ageing Horizons* 9:59-75.

Powell, Mebane. 2010. "Ageism and Abuse in the Workplace: A New Frontier." *Journal of Gerontological Social Work* 53(7):654-58.

McMullin, Julie A. and Victor W. Marshall, eds.
2010. *Aging and Working in the New Economy: Changing Career Structures in Small IT Firms.* Northampton, MA: Edward Elgar Publishing.



The case studies and analyses developed in this timely book provide insight into the structural features of small- and medium-sized firms in the information technology sector, and the implications of these features for the careers of people who are employed by them.

Using research conducted in Australia, Canada, England and the United States, the contributors explore how individuals manage their paid work within firms that are struggling to survive and compete in global economies. The book discusses the tensions that arise as workers and owners struggle for personal and firm survival, two processes that are often contradictory and occasionally produce conflict. The firms in this study show how the character of the small, New Economy is changing the relationship between employers and employees in increasingly significant ways.

A broadly international audience of scholars, students, human resource professionals and policymakers in business, public policy, economics and sociology will find this book of great interest.

Contributors: T.L. Adams, E. Brooke, N. Charness, M. Cooke, E.I. Demaiter, M.C. Fox, S.B. Haviland, V.W. Marshall, J.A. McMullin, J.C. Morgan, K. Platman, G. Ranson, K.M. Shuey, H. Spiegel. *

PRESIDENT

Anne Martin-Matthews, University of British Columbia, Canada, amm@interchange.ubc.ca

VICE-PRESIDENTS

Andreas Hoff, Oxford Institute of Ageing, UK, andreas.hoff@ageing.ox.ac.uk

Susan Feldman, Monash University, Australia, susan.feldman@monash.edu.au

TREASURER

Julie McMullin, The University of Western Ontario, Canada, mcmullin@uwo.ca

SECRETARY

Lucie Vidovičová, Masaryk University, Czech Republic, lucie.vidovic@seznam.cz

NEWSLETTER EDITOR

Esteban Calvo, Pontificia Universidad Católica, Chile, ecalvo@uc.cl

OFFICERS AT LARGE

Sally Bould, University of Delaware, United States

Libby Brooke, Swinburne University of Technology, Australia

Ricca Edmondson, University of Ireland Galway, Ireland

Kathrin Komp, University of Lethbridge, Canada

Arvind Joshi, Banaras Hindu University, India

Jacob John Kattakayam, University of Kerala, India

Hong Kin Kwok, Lingnan University, Hong Kong

Wendy Martin, Brunel University, UK

Shirley Nuss, United States

Virpi Timonen, Trinity College Dublin, Ireland

John Williamson, Boston College, USA

RC11 Board